

X45 COOLANT PUMP KIT

Part # 940326K, 942820K

Disassembly Instructions

⚠ WARNING

Ensure coolant system is cool and not pressurized before starting work.

⚠ WARNING

To avoid the risk of shock, disconnect power to the heater unit during disassembly/reassembly.

NOTICE

Isolating the heat exchanger coolant volume minimizes coolant loss. Collect coolant as per local regulations.

⚠ CAUTION

Do NOT damage coolant hose during removal.

NOTICE

DO NOT discard any component unless directed to do so.

1. Before proceeding, ensure coolant system is cool and not pressurized.
2. Disconnect power from the heater unit.
3. Cut and discard the cable (item 1) that secures the coolant pump electrical connector.
4. Disconnect the coolant pump electrical connector.
5. Isolate the heater coolant by clamping off heater inlet and outlet hoses or by turning off the coolant valves to the heater (if present).

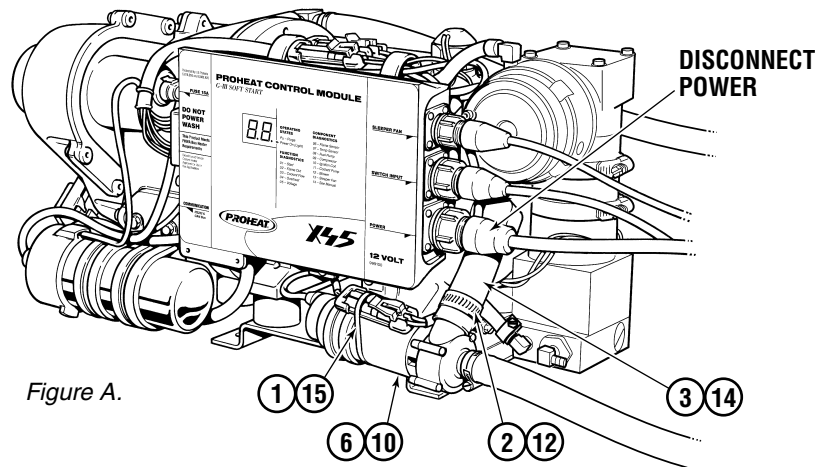


Figure A.

6. Remove the inlet hose clamp and coolant hose.
7. Remove the outlet hose clamps (item 2) from the coolant hose (item 3). Discard the hose clamps (item 2) and coolant hose (item 3).
8. Remove the bolt (item 4) that attaches the coolant pump P-clamp or J-bracket (item 5). Discard the coolant pump (item 6).
9. Discard all of the remaining components as per the disassembly checklist.

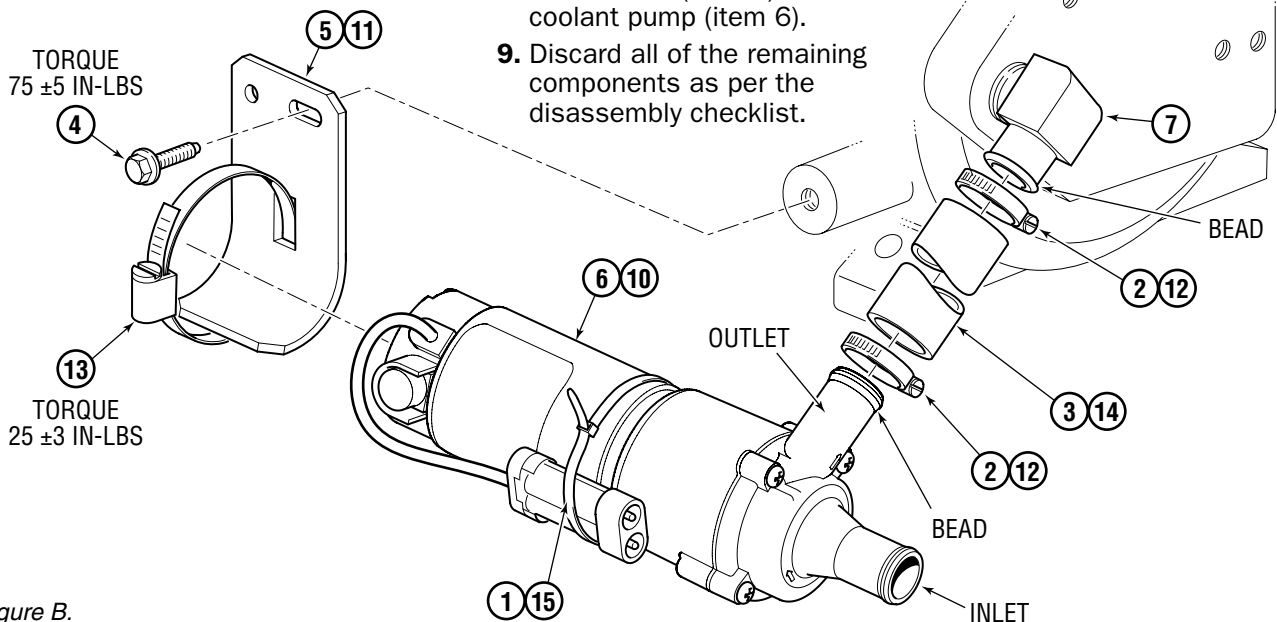


Figure B.



INSTALLATION INSTRUCTIONS

Copy Part# 980010, Rev. F, 02/2014

Page 2 of 2

Disassembly Parts Checklist

ITEM	RE-USE	DISCARD	DESCRIPTION	QTY	UOM
1		X	Cable Tie , 11.5"	1	ea
2		X	Hose Clamp, #10	2	ea
3		X	Coolant Hose, 3/4" ID	3	inch
4	X		Bolt, 1/4" NC x 5/8"	1	ea
5		X	P-Clamp or J-Bracket (Depends on heater version)	1	ea
6		X	Coolant Pump	1	ea
7	X		Elbow Fitting	1	ea

Reassembly Instructions

⚠ CAUTION

Failure to install new hose may result in pump failure due to contact with enclosure base.

⚠ CAUTION

Failure to install cable tie may result in coolant pump wire chafing and/or breakage.

⚠ CAUTION

DO NOT run pump dry. Pump does not self-prime

1. Install J-bracket (item 11) to heater body re-using bolt (item 4). Torque as shown in Figure B.
2. Slide new hose clamps (item 12) onto new coolant hose (item 14).
3. Install new coolant pump (item 10) into the new coolant hose (item 14) and into heater elbow fitting (item 7).
4. Position coolant pump on J-bracket (item 11) and install hose clamp (item 13) around J-bracket and coolant pump. Torque coolant pump hose clamp (item 13) as shown in Figure B.
5. Tighten hose clamps on the coolant hose (item 3) as per included Oetiker® Stepless Screw Clamps Part# 982921. Ensure to tighten hose clamps on the correct side of the elbow fitting (item 7) bead and the coolant pump (item 6) bead.
6. Re-install inlet coolant hose and hose clamp. Inspect hose for cracks or damage.
7. Secure electrical connector to circulation pump using the cable tie (item 15). Plug in connector.
8. Remove coolant hose pliers or open valves to allow coolant to flow through the heater. Do not power heater but run engine and heating system to get coolant flowing if required. Ensure heater and pump are filled with coolant.
9. Check system coolant level. Refill as required.
10. Restore power to the fully re-assembled heater unit and operate for a minimum of two cycles to ensure functionality. Inspect for any coolant leaks.

Reassembly Parts Checklist

ITEM	DESCRIPTION	QTY	UOM
10	Coolant Pump	1	ea
11	J-Bracket	1	ea
12	Hose Clamp, #10	2	ea
13	Hose Clamp, #32	1	ea
14	Coolant Hose, 3/4" ID	3	inch
15	Cable Tie, 11.5"	1	ea