

DOMETIC

PROHEAT VARIABLE M-SERIES HEATER



EN

Variable M-Series Heater

Parts Catalog

Serial numbers

VMH000001 —

Table of Contents

1 Important Safety Information	1-1
1.1 Explanation of symbols	1-1
1.2 Safety considerations	1-1
2 Selection Guide and Parts Descriptions	2-1
2.1 Parts descriptions	2-1
2.1.1 Heat exchanger	2-3
2.1.2 Burner head assembly	2-4
2.1.3 Fuel pump and air compressor	2-5
3 Numeric Parts Index	3-1

This page left intentionally blank.

1 Important Safety Information

1.1 Explanation of symbols

The symbols below are used throughout this publication to alert you to potential hazards involved with the operation and installation of this product. Observe these warnings and notices carefully. The safety alerts alone cannot eliminate hazards; strict compliance with any special instructions during installation, operation, and maintenance, along with common sense operation, are important measures to prevent hazardous situations.



DANGER!

Safety instruction: Indicates a hazardous situation that, if not avoided, will result in death or serious injury.



WARNING!

Safety instruction: Indicates a hazardous situation that, if not avoided, could result in death or serious injury.



CAUTION!

Safety instruction: Indicates a hazardous situation that, if not avoided, could result in minor or moderate injury.



NOTICE!

Indicates a situation that, if not avoided, can result in property damage.



NOTE

Supplementary information for operating the product.

1.2 Safety considerations



WARNING!

Exhaust: Inhalation of exhaust gas (containing carbon monoxide) may cause severe personal injury and/or death. Anyone suspected of suffering from CO inhalation should be removed from the hazardous area and given medical assistance immediately.



WARNING!

Explosion Hazard: Do not operate heater where combustible fumes or airborne particles, such as sawdust, are present.



WARNING!

Fuel: Exercise extreme caution when working near fuel or fuel-filled equipment. Do not operate heater during fueling operations. In addition, do not smoke or handle open flame equipment, such as a blowtorch, around fuel.

**WARNING!**

Fire Hazard: Do not place any flammable items around the heater and exhaust pipe.

**WARNING!**

Batteries: Wear hand and eye protection when working near batteries. Do not smoke or use open flames near batteries.

**WARNING!**

Electrical: Electric shock can cause severe personal injury, burns, and death. Before working on any unit, disconnect the batteries. Use only approved materials and methods when working on the electrical system and follow local electrical codes. Never work with electricity in wet conditions or when you are feeling fatigued.

**WARNING!**

Poisons/Toxins: Fuel and coolant are toxic and in some cases, carcinogenic. Wear eye and hand protection at all times. Remove contaminated clothing immediately and wash contaminated skin. Do not breathe in vapors.

**WARNING!**

Moving/Hot Parts: Moving parts can cause severe injury and or death. Before working on any unit, shut it off. Do not operate any unit until protective covers have been replaced. Always ensure bolts and clamps are correctly torqued and secured. Inspect mechanical components periodically for damage and corrosion.

**WARNING!**

Coolant: could cause serious personal injury. The coolant level in the expansion tank should be checked at least weekly (more frequently in high mileage or arduous conditions). Always check the level when the system is cold. Unscrew the filler cap slowly, allowing the pressure to escape before removing completely. Never run the engine without coolant.

Prevent anti-freeze coming in contact with the skin or eyes. If this occurs, rinse immediately with plenty of water. Anti-freeze will damage painted surfaces.

Never top-up with salt water. Even when traveling in territories where the water supply contains salt, always ensure you carry a supply of fresh (rain or distilled) water.

**DANGER!****California Proposition 65 Warning:**

Battery posts, terminals, and related accessories contain lead and lead compounds, chemicals known to the state of California to cause cancer and reproductive harm.

Wash hands after handling.

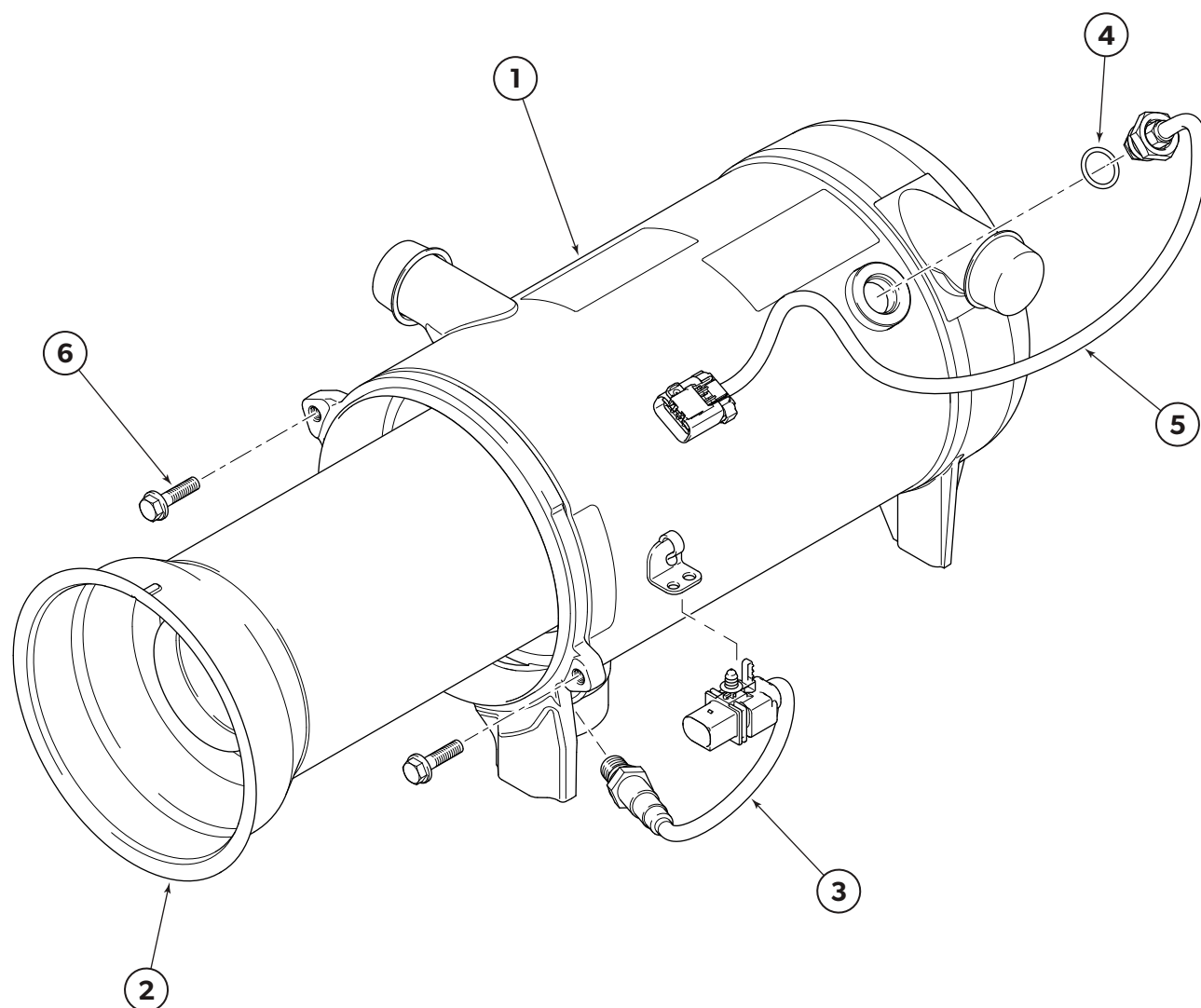
2 Selection Guide and Parts Descriptions

2.1 Parts descriptions

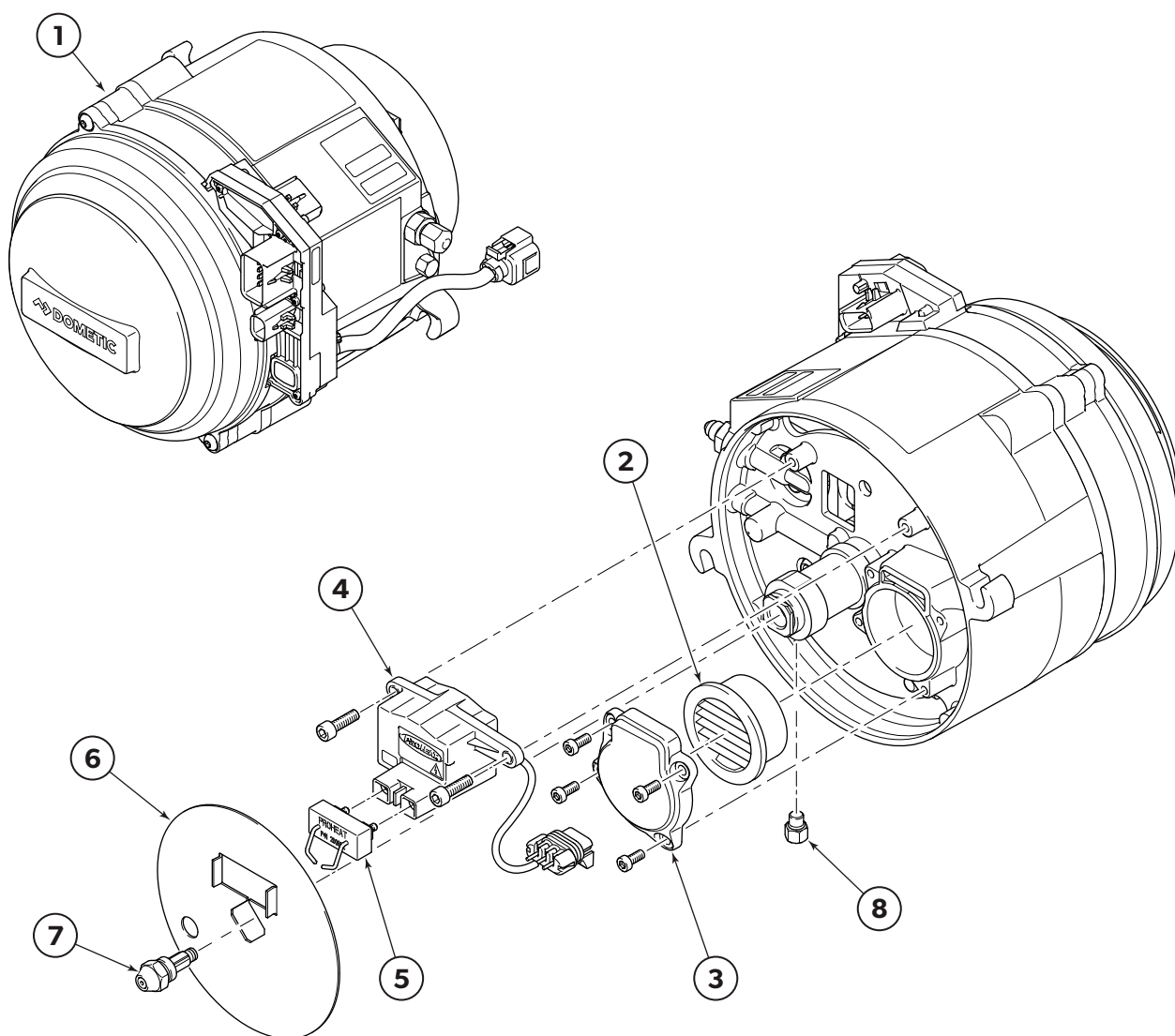
2.1.1 — Heat exchanger

2.1.2 — Burner head assembly

2.1.3 — Fuel pump and air compressor

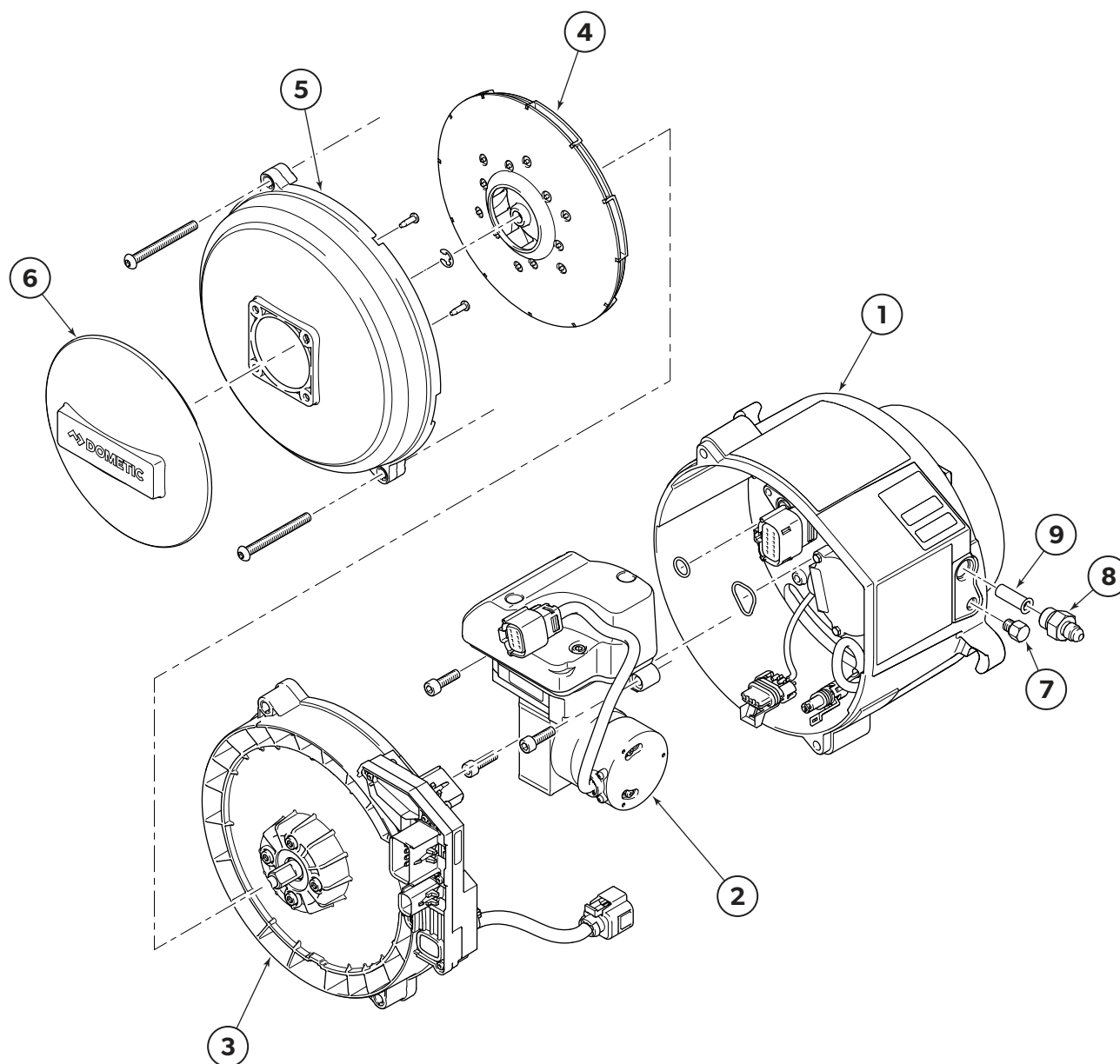


Item	Part#	Description	Item	Part#	Description
1	940430K	Heat exchanger, VM-Series c/w items 2, 3, 4, 5, 6	5	149010K	Sensor, temperature, dual mode c/w O-ring
2	200200K	Combustion tube, VM/M50/M80	6	850778K	Screw, M8 x 1.25 x 30 HWHCS (2/pkg)
3	149800K	Oxygen sensor			
4	917724K	O-ring, dual mode temperature sensor			



Item	Part#	Description
1	877201K	Burner head, splash guard, -4JIC, MOD SA
2	953420K	Element, air filter
3	149324K	Kit, Filter cover, c/w 8 screws
4	200850K	Ignition module, c/w fasteners and electrodes (item 5)
5	200802K	Ignition electrodes

Item	Part#	Description
6	877110K	Flame shield, VM-Series
7	877202K	Nozzle, VM-series
8	829325K	Hex plug, c/w O-ring



Item	Part#	Description	Item	Part#	Description
1	877104K	Flange & fuel pump assembly	6	200409K	Splash guard c/w fasteners
2	877400K	Air compressor, c/w fasteners	7	829325K	Hex plug, c/w O-ring
3	877501K	PCM & blower motor	8	877004K	Fitting, -6ORB-M x -4JIC-M
4	200419K	Blower, capped, c/w retaining ring	9	149481K	Screen, fuel c/w O-ring
5	877310K	Blower housing, VM-Series, c/w fasteners			

3 Numeric Parts Index

PART#	DESCRIPTION	PAGE#	PART#	DESCRIPTION	PAGE#
149010K	Sensor, temperature, dual mode c/w O-ring	2-2	877104K	Flange & fuel pump assembly	2-4
149324K	Kit, Filter cover, c/w 8 screws	2-3	877110K	Flame shield, VM-Series	2-3
149481K	Screen, fuel c/w O-ring	2-4	877201K	Burner head, splash guard, -4JIC, MOD SA	2-3
149800K	Oxygen sensor	2-2	877202K	Nozzle, VM-series	2-3
200200K	Combustion tube, VM/M50/M80	2-2	877310K	Blower housing, VM-Series, c/w fasteners	2-4
200409K	Splash guard c/w fasteners	2-4	877400K	Air compressor, c/w fasteners	2-4
200419K	Blower, capped, c/w retaining ring	2-4	877501K	PCM & blower motor	2-4
200802K	Ignition electrode	2-3	917724K	O-ring, dual mode temperature sensor	2-2
200850K	Ignition module, c/w fasteners and electrodes	2-3	940430K	Heat exchanger, VM-Series	2-2
829325K	Hex plug, c/w O-ring	2-3, 2-4	953420K	Element, air filter	2-3
850778K	Screw, M8 x 1.25 x 30 HWHCS (2/pkg)	2-2			
877004K	Fitting, -6ORB-M x -4JIC-M	2-4			

Mobile living made easy.



© 2024 DOMETIC

PRINTED IN CANADA 07/24

DOMETIC VANCOUVER
3831 NO.6 ROAD
RICHMOND, B.C.
CANADA V6V 1P6

www.dometic.com



FORM NO. SL9191 REV. A

