



X45 DATA LINK 5.01 KIT

Data Link Kit Part# PK0053-1
Windows 95, 98, ME
G-II Proheat Control Module (PCM) ONLY

The X45 Data Link software allows technicians to download the X45 operation history from the Proheat Control Module (PCM). It records operational events and errors in sequence allowing technicians to assist with product troubleshooting.

Software Installation – Windows

NOTICE

Periodically check www.proheat.com for the latest PK0053-1 software.

If software is downloaded from www.proheat.com, proceed to Step 3

- 1 Insert the X45 Data Link floppy disk into the disk drive.
- 2 Open **Windows Explorer**. In the folders pane under **My Computer**, **double-click** on the **b: drive** icon (or the drive letter for your floppy disk drive).
- 3 **Double-click** **X45 G-II Data Link Install 5.01** file from the folder.
- 4 The WinZip self-extracting archive will prompt you as shown in Figure A. Click **Unzip**.
- 5 Click **Close** to complete installation.

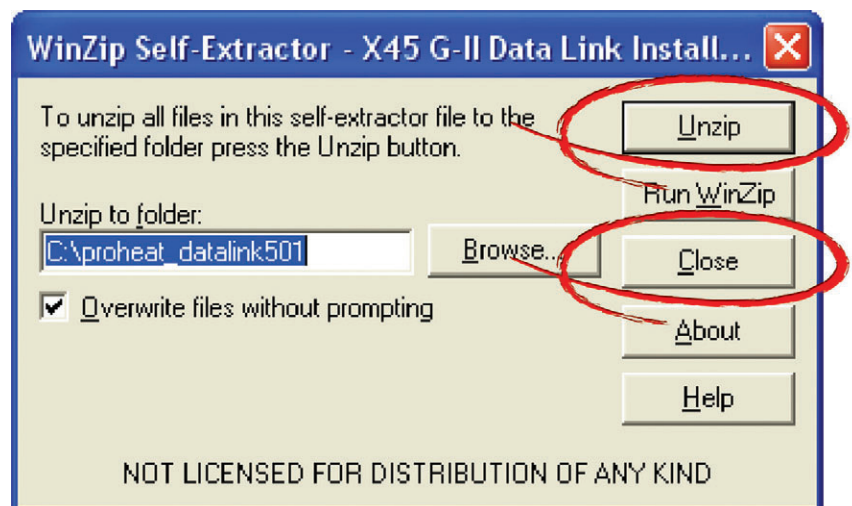


Figure A.

How to Run the Program

- 1 Connect the power cable and Data Link cable to the PCM as shown in Figure B.

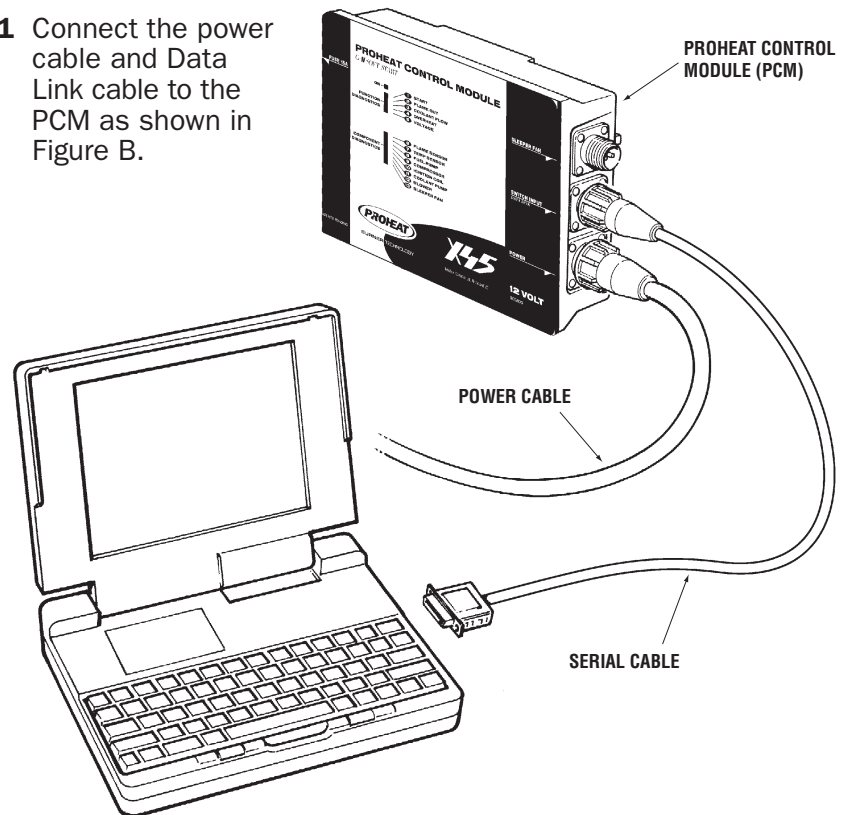


Figure B.

- 2 Open **Windows Explorer** and navigate to **c:\proheat_data link501** folder.
- 3 Double-click on **Proheat.exe**. Figure C should be displayed.

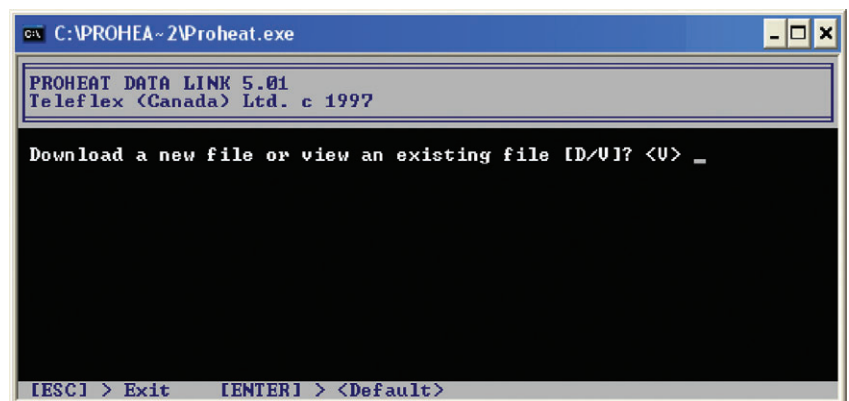


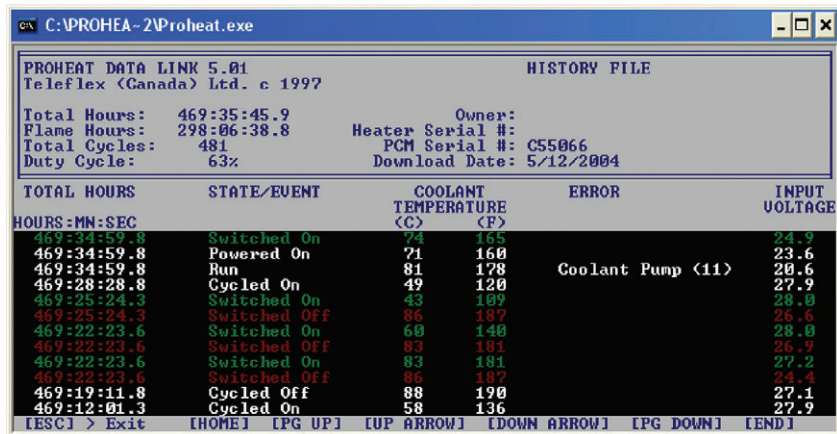
Figure C.

NOTICE

- The Download date defaults to the date set on your computer.
- Download time is approximately 3 minutes.
- Downloads will be automatically saved to **c:\proheat_datalink501** folder.

- 4 Follow the on-screen instructions to download (type '**D**') or view an existing file (type '**V**'). Figure D is an example of the data displayed. Use the **up-arrow**, **down-arrow**, **Page Up**, **Page Down** keys to navigate through the data.

For more information about STATE/EVENT and ERROR columns, refer to the X45 manual on www.proheat.com or contact Product Support at www.proheat.com.



PROHEAT DATA LINK 5.01
Teleflex (Canada) Ltd. c 1997

HISTORY FILE

Total Hours: 469:35:45.9 Owner:
Flame Hours: 298:06:38.8 Heater Serial #:
Total Cycles: 481 PCM Serial #: C55066
Duty Cycle: 63% Download Date: 5/12/2004

TOTAL HOURS	STATE/EVENT	COOLANT TEMPERATURE (C)	ERROR	INPUT VOLTAGE
469:34:59.8	Switched On	74		24.9
469:34:59.8	Powered On	71		23.6
469:34:59.8	Run	81		20.6
469:28:28.8	Cycled On	49		27.9
469:25:24.3	Switched On	43		28.0
469:25:24.3	Switched Off	86		26.6
469:22:23.6	Switched On	60		28.0
469:22:23.6	Switched Off	83		26.9
469:22:23.6	Switched On	83		27.2
469:22:23.6	Switched Off	86		24.4
469:19:11.8	Cycled Off	88		27.1
469:12:01.3	Cycled On	58		27.9

[ESC] > Exit [HOME] [PG UP] [UP ARROW] [DOWN ARROW] [PG DOWN] [END]

Figure D.